

Assoc. Prof. ESİN KUMLU



Personal Information

Email: esin.kumlu@deu.edu.tr

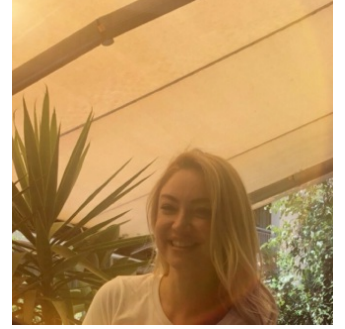
Web: <https://avesis.deu.edu.tr/esin.kumlu>

International Researcher IDs

ORCID: 0000-0002-6884-6382

Publons / Web Of Science ResearcherID: Q-1049-2019

Yoksis Researcher ID: 171567



Education Information

Doctorate, Dokuz Eylul University, Sosyal Bilimler Enstitüsü, Amerikan Kültürü Ve Edebiyatı (Dr), Turkey 2007 - 2010

Postgraduate, Dokuz Eylul University, Sosyal Bilimler Enstitüsü, Amerikan Kültürü Ve Edebiyatı (YI) (Tezli), Turkey 2004 - 2007

Undergraduate, Dokuz Eylul University, Edebiyat Fakültesi, Amerikan Kültürü ve Edebiyatı Bölümü, Turkey 2000 - 2004

Foreign Languages

English, C1 Advanced

Italian, B2 Upper Intermediate

Dissertations

Doctorate, Re-reading Sylvia Plath through the bell jar, Dokuz Eylul University, Sosyal Bilimler Enstitüsü, Amerikan Kültürü Ve Edebiyatı (Dr), 2010

Postgraduate, The contemporary reading of edith wharton: The inner chambers of the age of innocence, Dokuz Eylul University, Sosyal Bilimler Enstitüsü, Amerikan Kültürü Ve Edebiyatı (YI) (Tezli), 2007

Research Areas

Social Sciences and Humanities, Education in English, Philology

Academic Titles / Tasks

Associate Professor, Dokuz Eylul University, Buca Eğitim Fakültesi, Yabancı Diller Eğitimi Bölümü, 2021 - Continues

Assistant Professor, Dokuz Eylul University, Buca Eğitim Fakültesi, Yabancı Diller Eğitimi Bölümü, 2018 - 2021

Lecturer, Dokuz Eylul University, Buca Eğitim Fakültesi, Yabancı Diller Eğitimi Bölümü, 2011 - 2018

Research Assistant, Dokuz Eylul University, Buca Eğitim Fakültesi, Yabancı Diller Eğitimi Bölümü, 2007 - 2011

Academic and Administrative Experience

Fakülte Vakfı Yönetim Kurulu üyesi, Dokuz Eylül University, Buca Eğitim Fakültesi, Yabancı Diller Eğitimi Bölümü, 2023 - Continues
Staj Koordinatörü, Dokuz Eylül University, Buca Eğitim Fakültesi, Yabancı Diller Eğitimi Bölümü, 2021 - Continues
DOKUZ EYLÜL ÜNİVERSİTESİ/DİL EĞİTİMİ ARAŞTIRMA VE UYGULAMA MERKEZİ, Dokuz Eylül University, Buca Eğitim Fakültesi, Yabancı Diller Eğitimi Bölümü, 2021 - Continues
Kariyer ve Mezunlarla İlişkiler Bölüm Koordinatörü, Dokuz Eylül University, Buca Eğitim Fakültesi, Yabancı Diller Eğitimi Bölümü, 2020 - Continues
Assistant Coordinator, Dokuz Eylül University, Rektörlük, 2022 - 2023
Assistant Coordinator, Dokuz Eylül University, Rektörlük, 2022 - 2023

Courses

English Literature and Language Teaching I: Issues and Perspectives, Postgraduate, 2023 - 2024
ENGLISH LITERATURE I, Undergraduate, 2019 - 2020, 2018 - 2019, 2017 - 2018
TEACHING PRACTICE, Undergraduate, 2019 - 2020, 2018 - 2019, 2017 - 2018
DİL VE TOPLUM, Undergraduate, 2019 - 2020
SEÇMELİ II (İNGİLİZ EDEBİYATINDAN SEÇMELER II), Undergraduate, 2019 - 2020, 2018 - 2019, 2016 - 2017, 2015 - 2016, 2014 - 2015, 2013 - 2014, 2011 - 2012
SCHOOL EXPERIENCE, Undergraduate, 2019 - 2020, 2018 - 2019, 2017 - 2018, 2016 - 2017
OKUMA BECERİLERİ II, Undergraduate, 2019 - 2020
ENGLISH LITERATURE II, Undergraduate, 2019 - 2020, 2018 - 2019, 2017 - 2018
OKUMA BECERİLERİ I, Undergraduate, 2019 - 2020
SEÇMELİ 1 (İNGİLİZ EDEBİYATINDAN SEÇMELER 1), Undergraduate, 2019 - 2020
TOPLUMA HİZMET UYGULAMALARI, Undergraduate, 2019 - 2020, 2018 - 2019, 2017 - 2018, 2016 - 2017, 2015 - 2016, 2014 - 2015, 2013 - 2014, 2012 - 2013
SPECIAL TEACHING METHODS II, Undergraduate, 2018 - 2019, 2017 - 2018, 2016 - 2017, 2015 - 2016, 2014 - 2015, 2013 - 2014, 2012 - 2013, 2011 - 2012
COMPARATIVE EDUCATION, Undergraduate, 2018 - 2019, 2017 - 2018
SEÇMELİ I (İNGİLİZ EDB. SEÇMELER I), Undergraduate, 2018 - 2019, 2017 - 2018, 2016 - 2017, 2015 - 2016, 2014 - 2015, 2013 - 2014, 2012 - 2013
İNGİLİZ EDEBİYATI 1, Undergraduate, 2017 - 2018
LEXICAL COMPETENCE, Undergraduate, 2017 - 2018, 2016 - 2017, 2015 - 2016, 2014 - 2015, 2013 - 2014, 2012 - 2013
SEÇMELİ II (İNGİLİZ EDB. SEÇMELER II), Undergraduate, 2017 - 2018, 2012 - 2013
SPEAKING COURSE, Undergraduate, 2016 - 2017, 2015 - 2016
ORAL COMMUNICATION SKILLS I, Undergraduate, 2016 - 2017, 2015 - 2016, 2014 - 2015, 2013 - 2014
ORAL COMMUNICATION SKILLS II, Undergraduate, 2016 - 2017, 2015 - 2016, 2013 - 2014
TURKISH ENGLISH TRANSLATION, Undergraduate, 2015 - 2016
SCIENTIFIC RESEARCH METHODS, Undergraduate, 2014 - 2015, 2011 - 2012
LANGUAGE ACQUISITION, Undergraduate, 2012 - 2013
SEÇMELİ I (İNGİLİZ EDEB. SEÇMELER I), Undergraduate, 2011 - 2012

Advising Theses

Kumlu E., EXPLORING HOW CULTURALLY RESPONSIVE PEDAGOGY SHAPES THE PROFESSIONAL AND INDIVIDUAL IDENTITY OF PRE-SERVICE EFL TEACHERS, Postgraduate, A.YAMAÇ(Student), Continues

Jury Memberships

Post Graduate, Post Graduate, Kocaeli Üniversitesi, October, 2023

Post Graduate, Post Graduate, Kocaeli Üniversitesi, June, 2023

Post Graduate, Post Graduate, Kocaeli Üniversitesi, May, 2023

Doctoral Examination, Doctoral Examination, Dokuz Eylül Üniversitesi, January, 2023

PhD Thesis Monitoring Committee Member, PhD Thesis Monitoring Committee Member, Dokuz Eylül Üniversitesi, February, 2022

Post Graduate, Post Graduate, Dokuz Eylül Üniversitesi, April, 2020

Articles Published in Other Journals

- I. **Becoming A Dreamcatcher: Pre-service EFL Teachers' Experience of Culturally Relevant Pedagogy as Agents of Flexibility**
Kumlu E.
EDUCATIONAL RESEARCH AND REVIEWS, vol.18, no.9, pp.247-259, 2023 (Peer-Reviewed Journal)
- II. **COVID-19 PANDEMİ SÜRECİNİN İNGİLİZCE VE TÜRKÇE ÖĞRETMEN ADAYLARININ PSİKOLOJİK VE EĞİTİM YAŞAMLARI ÜZERİNDEKİ ETKİLERİNİN İNCELENMESİ**
Kumlu E., Külekçi G.
The Journal of Academic Social Science, no.138, pp.27-47, 2023 (Peer-Reviewed Journal)
- III. **Psychological Mindedness in ELT: Exploring Contributions of Comparative Literature to Pre-Service English Language Teachers' Psychological Mindedness**
Kumlu E.
EPASR, vol.17, no.2, pp.31-49, 2022 (Peer-Reviewed Journal)
- IV. **Gender Issues in English Language Teacher Education: Cinderella's Awakening through Comparative Literature**
Kumlu E., Çomoğlu H. İ.
Educational Policy Analysis and Strategic Research, vol.1, no.16, pp.99-112, 2021 (Peer-Reviewed Journal)
- V. **TROUBLING THE REALM OF ESTRANGEMENT: A COMPARATIVE ANALYSIS OF THE DOCILE AND THE RESISTANT BODY IN GIUSEPPE PITRÊ'S CATARINA THE WISE AND JEANNE MARIE LE PRINCE DE BEAUMONT'S BEAUTY AND THE BEAST**
Kumlu E.
RUMELİ DİL VE EDEBİYAT ARAŞTIRMALARI DERGİSİ, pp.573-587, 2020 (Peer-Reviewed Journal)
- VI. **20. YÜZYIL ROMANINDA GÖRÜLEMEN VE TUTUNAMAMAK: OĞUZ ATAY'IN TUTUNAMAYANLAR VE RALPH ELLISON'UN GÖRÜLMİYEN ADAM ADLI ESERLERİNDE YABANCILAŞMA KAVRAMININ KARŞILAŞTIRILMASI**
Kumlu E.
TURKISH STUDIES - LANGUAGE AND LITERATURE, vol.15, no.3, pp.1349-1367, 2020 (Peer-Reviewed Journal)
- VII. **UNVEILING THE IMPLICIT POLITICAL AGENDA: A COMPARATIVE ANALYSIS OF THE CONSTRUCTION OF GENDER ROLES IN GRIMM'S ASHPUTTEL AND GIUSEPPE PITRÊ'S THE MAGICAL LITTLE DATE TREE**
Kumlu E.
LITERA, vol.30, no.1, pp.155-175, 2020 (ESCI)
- VIII. **Unveiling the Implicit Political Agenda: A Comparative Analysis of the Construction of Gender Roles in Grimm's Ashputtel and Giuseppe Pitre's The Magical Little Date Tree**
Kumlu E.
LITERA-JOURNAL OF LANGUAGE LITERATURE AND CULTURE STUDIES, vol.30, no.1, pp.155-175, 2020 (ESCI)
- IX. **THE FALL OF THE PRINCESS: THE HIDDEN SOCIAL CONTRACT WITH THE FORMATION OF PSYCHOSEXUAL IDENTITY AND UNCONSCIOUS MIND OF WOMEN THROUGH FAIRY TALES**
Kumlu E.
ESKİŞEHİR OSMANGAZİ ÜNİVERSİTESİ SOSYAL BİLİMLER DERGİSİ, vol.18, no.2, pp.115-135, 2017 (Peer-Reviewed Journal)

- X. **KAHRAMAN'DAN VAH AMAN'A GİDEN YOLCULUK: KADININ ADI YOK VE CAM KIRIKLARI PARKI ROMANLARINDA KADIN SORUNSALININ ÇOCUK DÜNYASI ÜZERİNDEN KARŞILAŞTIRMALI OLARAK ÇÖZÜMLENMESİ**
KUMLU E.
FOLKLOR / EDEBİYAT, vol.23, no.92, pp.121-139, 2017 (Peer-Reviewed Journal)
- XI. **EXPLICATING FEMALE BODY AS A GEOGRAPHY OF MEMORY: THE COMPARATIVE SILENT REBELLION OF THE PSYCHE IN CHOPIN AND HAWTHORNE**
KUMLU E.
FOLKLOR / EDEBİYAT, vol.23, no.90, pp.95-110, 2017 (Peer-Reviewed Journal)
- XII. **A COMPARATIVE ANALYSIS OF THE MALE SETTING IN THE FIGHT CLUB AND A MAN ASLEEP**
KUMLU E.
SELÇUK ÜNİVERSİTESİ EDEBİYAT FAKÜLTESİ DERGİSİ-SELÇUK UNIVERSITY JOURNAL OF FACULTY OF LETTERS, vol.36, pp.139-156, 2016 (ESCI)
- XIII. **DEVELOPING CRITICAL THINKING SKILLS IN ELT CLASSES THROUGH NOVELS**
KÜLEKÇİ G., KUMLU E.
INTERNATIONAL JOURNAL OF LANGUAGE ACADEMY, vol.3, no.2, pp.76-90, 2015 (Peer-Reviewed Journal)
- XIV. **PROMOTING PRE-SERVICE ENGLISH LANGUAGE TEACHERS' INTERCULTURAL SENSITIVITY THROUGH COMPARATIVE LITERATURE**
KUMLU E., ÇOMOĞLU H. İ., KÜLEKÇİ G.
ROUTE EDUCATIONAL JOURNAL, vol.2, no.2, pp.160-167, 2015 (Peer-Reviewed Journal)
- XV. **İKİ ÇOCUK, İKİ KÜLTÜR, İKİ HİKAYE TEK DÜNYA: PİNHAN VE ALICE HARİKALAR DİYARI ROMANLARINDA KÜLTÜR KODLARININ KARŞILAŞTIRMALI OLARAK OKUNMASI**
KUMLU E.
TURKISH STUDIES, vol.9, no.12, pp.477-499, 2014 (Peer-Reviewed Journal)
- XVI. **PROMISING AN ALTERNATIVE PATH: ANALYZING STUDENTS' ATTITUDES TOWARDS COMPARATIVE LITERATURE STUDIES**
KUMLU E.
ULUSLARARASI DİL VE EDEBİYAT EĞİTİMİ DERGİSİ, vol.2, no.8, pp.52-61, 2013 (Peer-Reviewed Journal)
- XVII. **FALLING FROM GRACE: ANALYZING THE LANDCAPE OF DEPRESSION IN THE PROZAC NATION YOUNG AND DEPRESSED IN AMERICA AND THE LAST YANKEE**
KUMLU E.
THE JOURNAL OF ACADEMIC SOCIAL SCIENCE STUDIES, vol.6, no.7, pp.761-781, 2013 (Peer-Reviewed Journal)
- XVIII. **UYANIŞ VE KALP AĞRISI ROMANLARINDA KADIN YAŞAMININ ORTAK SEMBOLLER ÜZERİNDEN İNCELENMESİ**
KUMLU E.
FIRAT ÜNİVERSİTESİ SOSYAL BİLİMLER DERGİSİ, vol.23, no.1, pp.19-31, 2013 (Peer-Reviewed Journal)
- XIX. **DECONSTRUCTING THE CAPTIVE EDUCATION: CREATING DIFFERENCE AMONG THE LONELY CROWD**
KUMLU E.
SINO-US ENGLISH TEACHING, vol.9, no.4, pp.1083-1091, 2012 (Peer-Reviewed Journal)
- XX. **AŞK SANATI, SAMANYOLU VE AŞK ESERLERİNDE ORTAK TEMALARIN İNCELENMESİ**
KUMLU E.
ULUSLARARASI AVRASYA SOSYAL BİLİMLER DERGİSİ, vol.3, no.6, pp.10-23, 2012 (Peer-Reviewed Journal)
- XXI. **THE MONA LISA SMILE OF SYLVIA PLATH: DESTROYING THE DISTORTED PICTURE OF REALITY**
KUMLU E.
SELÇUK ÜNİVERSİTESİ SOSYAL BİLİMLER ENSTİTÜSÜ DERGİSİ, vol.25, pp.173-182, 2011 (Peer-Reviewed Journal)
- XXII. **READING ASYLUM AS A FORM OF SIMULACRA: THE BURDEN OF CARRYING THE LETTER M IN THE BELL JAR**
KUMLU E.
FIRAT ÜNİVERSİTESİ SOSYAL BİLİMLER DERGİSİ, vol.21, no.1, pp.37-56, 2011 (Peer-Reviewed Journal)
- XXIII. **NOT THE MAD WOMAN IN THE ATTIC BUT THE CULTURAL CRITIQUE: UNDERSTANDING THE ORGANIC WRITING OF SYLVIA PLATH THROUGH THE BELL JAR**

KUMLU E.

ATATÜRK ÜNİVERSİTESİ SOSYAL BİLİMLER ENSTİTÜSÜ DERGİSİ, vol.14, no.2, pp.133-145, 2010 (Peer-Reviewed Journal)

Books & Book Chapters

- I. **Environmental Awareness as a 21st Century Skill: Promoting a Better World Through Pre-Service Teacher Education / Powerful Teaching**
Kumlu E.
in: 21st Century Skills in Language Education, Prof. Dr. Feryal Çubukçu, Editor, Eğiten Kitap, Ankara, pp.109-124, 2023
- II. **NAVIGATING INITIAL TEACHER EDUCATION TO A SUSTAINABLE WORLD: PROMOTING ENVIRONMENTAL AWARENESS FOR SOCIAL CHANGE**
KUMLU E.
in: Current Research in Education, Doç. Dr. Onur Zahal, Editor, GECE KTAPLIĞI, Ankara, pp.95-121, 2022
- III. **INTERGRATING MINDFULLNESS TRAINING INTO COMPARATIVE LITERATURE PRACTICES OF PROSPECTIVE EFL TEACHERS: A NEW DIRECTION FOR IMPROVING TEACHER EDUCATION**
KÜLEKÇİ G., KUMLU E.
in: SOSYAL BEŞERİ VE İDARİ BİLİMLER ALANINDA ARAŞTIRMA VE DERLEMELER, Doç. Dr. Yüksel Atalay, Editor, GECE AKADEMİ, Ankara, pp.191-211, 2019
- IV. **KARŞILAŞTIRMALI EDEBİYAT KURAMININ İNGİLİZCE ÖĞRETMEN ADAYLARININ BİLİNÇLİ FARKINDALIKLARINI GELİŞTİRMESİNE KATKISI**
KUMLU E., ÇOMOĞLU H. İ.
in: CURRENT ACADEMIC STUDIES IN EDUCATION SCIENCES, HARUN ŞAHİN, ABİDİN TEMİZER, FATMA ERDOĞAN, Editor, IVPE, Centinje, pp.873-880, 2019
- V. **FALLING FROM GRACE: ANALYZING THE LANDSCAPE OF DEPRESSION IN PROZAC NATION AND THE LAST YANKEE**
KUMLU E.
in: FAMILY ISSUES IN THE 21ST CENTURY. CHILD REARING: PRACTICES, ATTITUDES AND CULTURAL DIFFERENCES, Goetz Egloff, Editor, NOVA SCIENCE PUBLISHERS, INC., New York, pp.145-168, 2017
- VI. **TEACHING FAIRY TALES THROUGH COMPARATIVE LITERATURE**
KUMLU E.
in: LITERATURE AND LANGUAGE TEACHING, BANU İNAN, DOĞAN YÜKSEL, Editor, PEGEM, Ankara, pp.119-134, 2013
- VII. **USING NOVELS IN ELT**
KUMLU E.
in: TEACHING SKILLS: FROM THEORY TO PRACTICE, FATMA FERYAL ÇUBUKÇU, Editor, NOBEL, Ankara, pp.197-206, 2012
- VIII. **A HOUSE OF CARDS: DESTROYING THE DISTORTED PICTURE OF REALITY**
KUMLU E.
in: RESTLESS TRAVELLERS: QUEST FOR IDENTITY ACROSS EUROPEAN AND AMERICAN TIME AND SPACE, ANTONIO JOSE MIRALLES, Editor, CAMBRIDGE SCHOLARS PUBLISHING, Newcastle, pp.171-178, 2011

Refereed Congress / Symposium Publications in Proceedings

- I. **INTEGRATING MINDFULLNESS TRAINING INTO COMPARATIVE LITERATURE PRACTICES OF PROSPECTIVE EFL TEACHERS: A NEW DIRECTION FOR IMPROVING TEACHER EDUCATION**
KÜLEKÇİ G., KUMLU E.
6. ULUSLARARASI MULTİSİPLİNER ÇALIŞMALAR KONGRESİ, Gaziantep, Turkey, 26 - 27 April 2019, pp.119

- II. **KARŞILAŞTIRMALI EDEBİYAT KURAMININ İNGİLİZCE ÖĞRETMEN ADAYLARININ BİLİNÇLİ FARKINDALIKLARINI GELİŞTİRMESİNE KATKISI**
KUMLU E., ÇOMOĞLU H. İ.
ISMS ANKARA, Ankara, Turkey, 16 - 17 November 2018, pp.98
- III. **NEW PERSPECTIVES IN COMPARATIVE LITERATURE: HOW FAIRY TALES TRANSFORM THE UNCONSCIOUS MIND OF CHILDREN**
KUMLU E.
INOVED, Aydın, Turkey, 19 - 21 October 2017, pp.121
- IV. **EMPOWERING CULTURAL DIVERSITY IN ENGLISH LANGUAGE TEACHER EDUCATION**
KÜLEKÇİ G., ÇOMOĞLU H. İ., KUMLU E.
12TH ODTU ELT CONVENTION, Ankara, Turkey, 12 - 14 May 2017, pp.60
- V. **ANALYZING GENDER TROUBLE BEHIND THE VEIL: A COMPARATIVE ANALYSIS OF FARIRY TALES AS AN ORIGIN OF FEMALE SELF IN ELT CLASSES**
KUMLU E.
INTERNATIONAL CONFERENCE ON COMPARATIVE LITERATURE 17', İstanbul, Turkey, 10 - 11 March 2017, pp.24-34
- VI. **THE MAGICAL TOUCH OF COMPARATIVE LITERATURE**
KUMLU E.
INTERNATIOANAL CONFERENCE ON COMPARATIVE LITERATURE 17', İstanbul, Turkey, 10 - 11 March 2017, pp.24-34
- VII. **AMERİKAN KİMLİK TRAVMASINDA HENRY JAMES MOTİFLERİ: WASHINGTON MEYDANI**
KUMLU E.
AKŞİT GÖKTÜRK'Ü ANMA TOPLANTISI, Turkey, 12 - 13 March 2009, pp.121-132
- VIII. **DEVELOPING INTERCULTURALLY COMPETENT ENGLISH LANGUAGE TEACHERS THROUGH COMPARATIVE LITERATURE**
ÇOMOĞLU H. İ., KÜLEKÇİ G., KUMLU E.
WCEIS ANTALYA, Antalya, Turkey, 6 - 08 October 2014, pp.98
- IX. **Using Comparative Literature In The ELT Classroom: Underlining The Post-Modern Sister Carrie In Some Girls: My Life In A Harem**
KUMLU E.
5th World Conference on Educational Sciences (WCES), Rome, Italy, 5 - 08 February 2013, vol.116, pp.502-508
- X. **BUILDING A BRIDGE BETWEEN CULTURAL STUDIES AND THE ELT CLASSROOM: TEACHING DRAMA VIA COMPARATIVE LITERATURE**
KUMLU E.
2nd Cyprus Interntional Conference on Educational Sciences, Lefkoşa, Cyprus (Kktc), 14 - 16 February 2013, vol.89, pp.848-855
- XI. **Building a Bridge between Cultural Studies and Comparative Literature**
KUMLU E.
2nd Cyprus International Conference on Educational Research (CY-ICER), CYPRUS, 14 - 16 February 2013, vol.89, pp.848-855
- XII. **Savaşın Gözyaşları Korku: Sylvia Plath ile Çocuk ve İçimizdeki Çocuga Yolculuk**
KUMLU E.
2. KORKU ANLATILARI KONFERANSI: KORKU ANLATILARINDA ÇOCUK, İstanbul, Turkey, 24 - 25 May 2012
- XIII. **WHO LABEL WOMEN?: ENLIGHTENING THE CAPTIVATED NATURE IN THE YELLOW WALLPAPER AND THE BIRTH MARK**
KUMLU E.
5. ULUSLARARASI DİL, YAZIN, DEYİŞ SEMPOZYUMU, Ankara, Turkey, 3 - 05 November 2010, pp.37-40
- XIV. **SARKAÇ MİSALİ KADIN PORTRELERİ: KLİŞELERİN KISKACINDA YAŞAMLAR**
KUMLU E.
II. ULUSLARARASI BİR BİLİM KATEGORİSİ OLARAK KADIN. "KADIN": EDEBİYAT, DİL VE KÜLTÜR ÇALIŞMALARINDA KADIN SEMPOZYUMU, Aydın, Turkey, 27 - 29 April 2009, vol.2, pp.316-320

- XV. **ENTERING THE SANCTUARY OF THE HISTORICAL LOGOS: READING FEMALE BODY AS A VISUALISED LANDSCAPE**
KUMLU E.
ULUSLARARASI MULTİDİSİPLİNER KADIN KONGRESİ, İzmir, Turkey, 13 - 16 October 2009, vol.2, pp.289-293
- XVI. **DESTRUCTING THE SIMULACRA-BUILDING A NEW FUTURE: POSSIBILITY OF A NEW WORLD IN CHUCK PALAHNIUK'S DIARY A NOVEL**
KUMLU E.
1st INTERNATIONAL AKŞİT GÖKTÜRK CONFERENCE, İstanbul, Turkey, 15 - 16 April 2010, pp.185-197
- XVII. **DECONSTRUCTING THE CAPTIVE EDUCATION: CREATING DIFFÊRENCE AMONG THE LONELY CROWD**
KUMLU E.
INTERNATIONAL CONGRESS OF COMPARATIVE LITERATURE AND THE TEACHING OF LITERATURE AND LANGUAGE: WE SPEAK THE SAME CULTURE, Ankara, Turkey, 29 April - 01 May 2009, pp.457-462
- XVIII. **THE ENCHANTING BEAUTY OF THE BELL JAR: THE POSTMODERN DIVINE COMEDY AND PROCLAMATION OF DIFFERENCE**
KUMLU E.
THE SYLVIA PLATH 75TH YEAR SYMPOSIUM, 25 - 29 September 2007
- XIX. **A HOUSE OF CARDS: DESTRUCTING THE DISTORTED PICTURE OF REALITY**
KUMLU E.
II. INTERNATIONAL CONFERENCE ON NATION AND IDENTITY IN 19TH AND 20TH CENTURY LITERATURE, Murcia, Spain, 20 - 21 September 2007
- XX. **THE ENCHANTING BEAUTY: THE POWER OF DIFFERENCE, THE OTHER, AND THE FOREIGNER**
KUMLU E.
1st GLOBAL CONFERENCE: FEAR, HORROR, TERROR, Oxford, United Kingdom, 10 - 12 September 2007
- XXI. **INDISPENSABLE ATTRACTION: LITERATURE AND TEACHER**
KUMLU E.
ULUSLARARASI 7. DİL, YAZIN, DEYİŞBİLİM SEMPOZYUMU, Konya, Turkey, 2 - 05 May 2007, pp.735-742

Activities in Scientific Journals

BATI ANADOLU EĞİTİM BİLİMLERİ DERGİSİ, Publication Committee Member, 2021 - Continues

Buca Eğitim Fakültesi Dergisi, Publication Committee Member, 2019 - Continues

Buca Eğitim Fakültesi Dergisi, Foreign Language Redactor, 2019 - Continues

Metrics

Publication: 52